



TYPICAL USES

- Lobbies & Entry Ways
- Walkways
- Showrooms
- Concourses
- Waiting Rooms
- Aisles
- Retail Areas

PACIFIC / BLIZZARD

*Re*FLExions Designer Flooring by Dur-A-Flex® is a decorative, poured in place flooring system combining Dur-A-Flex's durable and reliable resin systems with the latest in effects pigments to produce inspiring one-of-a-kind looks. ReFLExions consists of a pigmented, epoxy primer coat; pigmented, epoxy body coat and a long-wearing, gloss or satin finish urethane topcoat. In addition to its seamless cleanability, it requires no waxing.

UNIQUE IN EVERY WAY

- A smooth, glass-like finish offering breath-taking looks
- Choose from single or multicolor applications
- Limitless combinations allows you to make your own unique floor
- Totally seamless – easily integrates into coves and walls
- Competitively priced with traditional flooring options

DUR-A-FLEX DURABILITY

- Exceptional wear characteristics
- Stain resistant
- Chemical resistant
- UV stability ensures consistent color for the life of the floor

LOW MAINTENANCE

- No waxing required – ever
- Reduces maintenance costs up to 85%

SUSTAINABLE

- Uses 100% solids epoxies and aliphatic urethanes
- Zero VOCs
- CA 01350 air quality compliant
- Requires no harsh cleaners



CA 01350
COMPLIANT



COPPER



TITANIUM

ReFLEXions Standard Colors



BLIZZARD



TITANIUM



NIMBUS



COPPER



SPICE



HAZELNUT



GARNET



COFFEE



DEEP SEA



SKY



PACIFIC



ONYX (For use as a primer or background color only)

ReFLEXions Designer Floors can be further enhanced by combining any of the standard colors, offering limitless opportunities for a one-of-a-kind floor. While the options are endless, please see below for some suggested accent combinations:



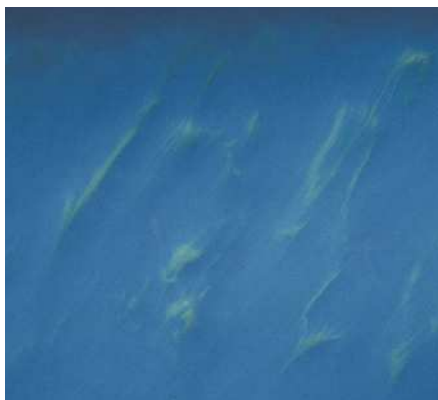
TITANIUM with NIMBUS Accent



DEEP SEA with SKY Accent



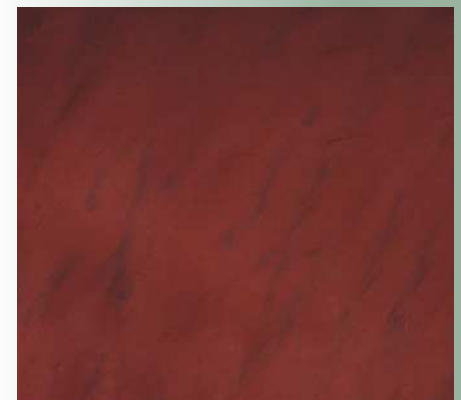
COPPER with COFFEE Accent



PACIFIC with TITANIUM Accent



NIMBUS with TITANIUM Accent



GARNET with NIMBUS Accent

The samples shown are only close approximations and should not be used for specification purposes. Contact Dur-A-Flex to obtain actual samples for best color selection.



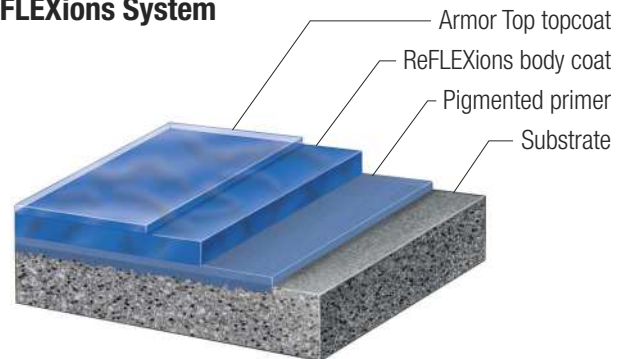
Physical Properties

Properties	Test Method	Result
Hardness (Shore D)	ASTM D-2240	75-80
Water Absorption	ASTM D-570	0.04%
Flammability	ASTM D-635	Self extinguishing
Flame Spread/NFPA 101	ASTM E-84	Class A
Tensile Strength	ASTM D-638	3,700 psi
Flexural Strength	ASTM D-790	4,700 psi
Compressive Strength	ASTM D-695	16,000 psi
Izod Impact (ft. Lb./in. notch)	ASTM D-256	0.50
Bond Strength to Concrete	ASTM D-4541	400 psi substrate fails
Elevated Temperature	MIL D-3134	No slip or flow
Thermal Shock	MIL F-52505	No cracking or loss of adhesion
50 cycles of immersion in chilled & boiling water		
UV Resistance	MIL F-52505	No chalking or loss of adhesion
Abrasion Resistance	ASTM D-4060	10 mg. loss - Gloss finish
CS17 Wheel 1000 GR Load 1000 Cycles		12 mg. loss - Satin finish
VOC Content		0 g/L
Salt Spray Resistance, 25% solution at 90°F		No effect after 100 hours
Toxicity		Non-toxic, meets USDA requirements

LEED® Eligibility

ReFLEXions	Possible LEED Credits
Construction Waste Mgmt MR2	2
Regional Material MR 5.1, 5.2	2
Low Emitting Materials IEQ 4.2, 4.3	2

ReFLEXions System



No one makes it easier to select, specify and install high performance flooring systems than Dur-A-Flex. Every step of the way, you'll experience superior customer service, professionalism and expertise as well as finely tuned processes—all the essentials which contribute to a solid business relationship.

10/14



DUR-A-FLEX
INNOVATION FROM THE FLOOR UP

CONNECTICUT | ILLINOIS | CALIFORNIA
Toll Free 800-253-3539 | 860-528-9838 | www.dur-a-flex.com

